

Pointmaker® CS-64D Chroma System

3-Step Camera Alignment for Each Use

- 1. POSITION Camera to Preset Marks**
- 2. FRAME camera to FOV Marks**
- 3. ALIGN Markings with Talent Motions**

In most studios, the camera that is used with the Pointmaker® CH-30 Chroma-board is also used for other purposes. Often, this gives the camera operator only 30 to 60 seconds to reposition the camera toward the Chroma-board and make the alignments below. This quick card is provided to camera operators to assist with streamlining this process. We recommend that a few “practice” alignments be made beforehand when there is more time.

- 1. POSITION Camera to Preset Marks** – Precisely reposition the camera perpendicular to, and centered in front of, the Pointmaker CH-30 Chroma-board. This camera position should have been marked on the floor, and the height of the camera marked on the camera pedestal. *Refer to Figure 1 on back.*
- 2. FRAME Camera to FOV Marks** – Adjust the zoom of the camera to a preset FOV (field of view). Because this field of view must be repeatable, the boundaries defining the field of view should have been marked on the key-colored cloth with clear or key-colored tape. Zoom the camera so that the exact same field of view appears every time. IF THIS STEP IS NOT MADE, the markings will be misaligned with the Talent’s pointing motions. *Refer to Figure 2 on back.*
- 3. ALIGN Markings with Talent Motions** – Perform steps A and B below to match the on-screen markings with the Talent’s drawing motions. Be sure the Pointmaker video marker is operational, and that the camera operator (or someone directing him/her) is watching a monitor displaying both the talent and the markings. *Refer to Figure 3 on back.*

A. Horizontal Alignment:

Talent: Slowly draw a vertical line by pressing a finger on the Chroma-board and dragging it from the top of the board to the bottom (or from bottom to top).

Camera Operator: While the drawing takes place, pan the camera to align the talent’s finger to the vertical line being drawn by the Pointmaker on the preview monitor.

NOTE: Repeat this procedure until an accurate horizontal alignment is achieved.

B. Vertical Alignment:

Talent: Slowly draw a horizontal line by pressing a finger on the Chroma-board and dragging it from the left edge of the board to the right edge (or from right to left).

Camera Operator: While the drawing takes place, tilt the camera to align the talent’s finger to the horizontal line being drawn by the Pointmaker on the preview monitor.

NOTE: Again, repeat this procedure until an accurate vertical alignment is achieved.

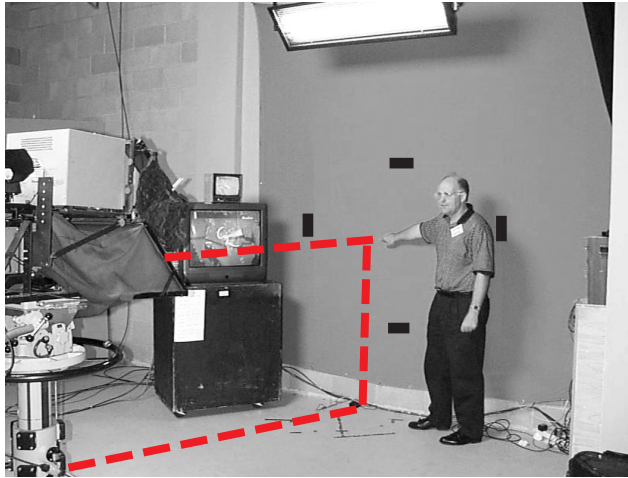


Figure 1 – **POSITION** Precisely reposition the camera perpendicular to, and centered in front of, the Pointmaker CH-30 Chroma-board. Floor and camera pedestal should be marked.

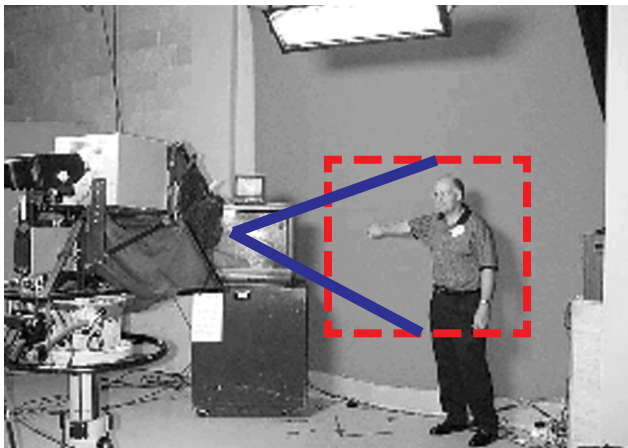


Figure 2 – **FRAME EXACTLY** Adjust the zoom of the camera to a previously marked field of view. Perimeter of shot should have been marked (see black marks in Figure 1).

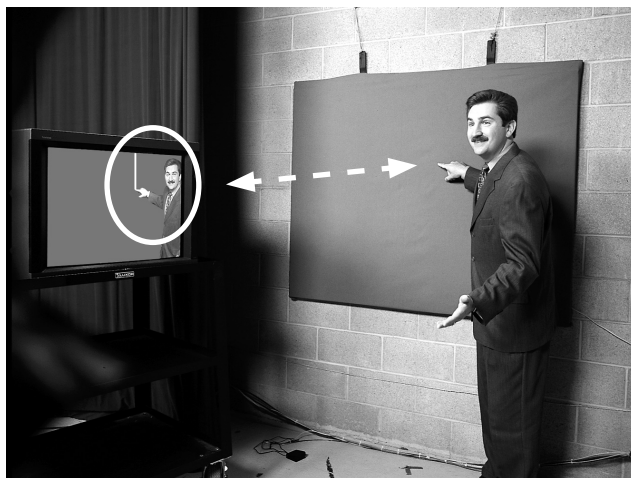


Figure 3 – **ALIGN MARKINGS WITH TALENT MOTIONS** Pan and tilt the camera to align horizontal and vertical markings drawn by talent.